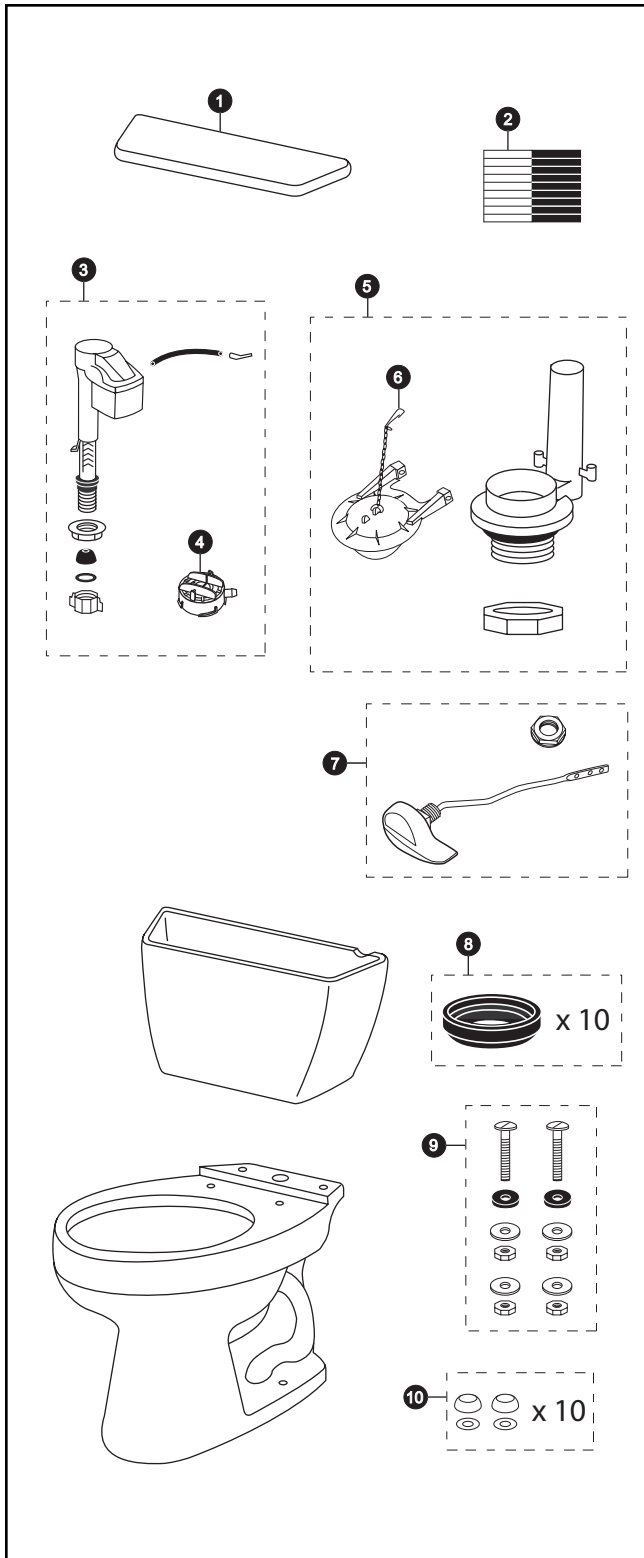


CST744SL

CST744SL
ST743S
C744SL

Drake™ 1.6 Gpf Toilet, Elongated, G-Max™, ADA, 12" Rough-In



Item	Part	Description
1	TCU706CR#01	Tank Lid w/ Velcro Tape
	TCU706CR#03	Tank Lid w/ Velcro Tape
	TCU706CR#04	Tank Lid w/ Velcro Tape
	TCU706CR#11	Tank Lid w/ Velcro Tape
	TCU706CR#12	Tank Lid w/ Velcro Tape
	TCU706CR#51	Tank Lid w/ Velcro Tape
2	THU107	Velcro Tape
3	TSU08A.6	Fill Valve
4	THU123	Diaphragm Cap
5	THU129Z	Flush Valve
6	THU138S	Flapper w/ Chain
7	THU068#01	Trip Lever
	THU068#03	Trip Lever
	THU068#04	Trip Lever
	THU068#11	Trip Lever
	THU068#12	Trip Lever
	THU068#51	Trip Lever
	THU068#CP	Trip Lever
	THU068#PB	Trip Lever
8	THU131	Tank to Bowl Gaskets (for 10 toilets)
9	TSU01D	Tank Mounting Kit
10	THU098#01	Bolt Cap Sets (for 10 toilets) for #01 & #11
	THU098#03	Bolt Cap Sets (for 10 toilets) for #03 & #12
	THU098#04	Bolt Cap Sets (for 10 toilets)
	THU098#51	Bolt Cap Sets (for 10 toilets)

Product Number Explanations

Two-Piece Toilet
(CST) Gravity Type Toilet
(744) Model
(S) G-Max™
(L) ADA Compliant

Tank
(ST) Tank
(743) Model
(S) G-Max™

Bowl
(C) Bowl
(744) Model
(S) G-Max™
(L) ADA Compliant

Colors
(#01) Cotton
(#03) Bone
(#04) Gray
(#11) Colonial White
(#12) Sedona Beige
(#51) Ebony

Finishes
(#CP) Chrome Plated
(#PB) Polished Brass